



**NOTICE OF A JOINT WORKSHOP TO BE HELD BY THE  
McALLEN PUBLIC UTILITY BOARD OF TRUSTEES  
AND THE McALLEN BOARD OF COMMISSIONERS**

**DATE: Monday, June 24, 2024**

**TIME: 4:00 P.M.**

**PLACE: McAllen City Hall  
Commission Chambers – 3<sup>rd</sup> Floor  
1300 Houston Avenue  
McAllen, Texas 78501**

**SUBJECT MATTER:**

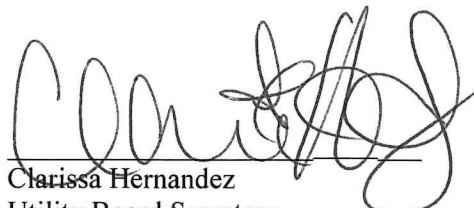
**CALL TO ORDER**

1. Presentation on McAllen Public Utility's Drought Contingency Plan

**END OF JOINT MEETING**

**CERTIFICATION**

I, the Undersigned authority, do hereby certify that the attached agenda of meeting of the McAllen Public Utility Board of Trustees is a true and correct copy and that I posted a true and correct copy of said notice on the bulletin board in the Municipal Building, a place convenient and readily accessible to the general public at all times, and said Notice was posted on the 21st day of June, 2024 at 2:00 P.M. and will remain so posted continuously for at least 72 hours preceding the scheduled time of said meeting in accordance with Chapter 551 of the Texas Government Code.

  
Clarissa Hernandez  
Utility Board Secretary

**Presentation for McAllen  
Public Utility's Drought  
Contingency Plan**

---

**Joint CC/MPUB Workshop**

**June 24, 2024**

- **CURRENT DROUGHT STATUS**
- **DROUGHT STAGES**
- **DROUGHT RESPONSE**

# DROUGHT STATUS

## Rio Grande Flows & Reservoirs Conditions

USRT1124	CMS	CFS
RG Below Caballo Dam	2574	2,423
RG at El Paso	2591	215
RG Below American Dam	307	106
American Canal	2040	750
RG at Fort Quitman	0.25	0
RG Above Rio Conchos	787	827
RG Below Rio Conchos	0.49	17
RG at Johnson Ranch	0.21	33
RG at FORTY RANCH	5.11	180
Peecos near Langtry	2.21	115
Dewitt at Pafford	2.33	100
Amistad Reservoir		
RG at Lee Rio	13.90	637
RG at Eagle Pass	45.40	1,729
RG near El Indio	40.40	1,427
RG at Colombia	39.47	1,374
RG at Laredo	53.31	1,933
Falcon Reservoir		
RG at Rio Grande City	45.07	1,594
RG Below Azadinas	33.89	1,200
RG at San Benito	9.28	328
RG at Brownsville	1.85	65
Arzobispo Gauge	31.23	118
Arzobispo Pool Facility (pond)	7.22	

AMISTAD ABOVE/BELW CONSERVATION - FT	48.38
FALCON ABOVE/BELW CONSERVATION - FT	49.28

Elephant Butte	MCM	AF
Normal Conservation	2,023.432	
Current Storage	201	423.382
Percent in storage	20.57%	20.97%

Caballo Dam	MCM	AF
Normal Conservation	230	228.682
Current Storage	40	48.443
Percent in storage	21.43%	21.43%

Amistad Dam	MCM	AF
Normal Conservation	3,980	3,226.104
Current Storage	773	458.872
Percent in storage	19.42%	16.42%
Current Elevation	3,125.630	1,043.64
Discharge in CMS/CFS US	40.0	1,172
Discharge in CMS/CFS MX	3.0	106

Falcon Dam	MCM	AF
Normal Conservation	3,250	2,908.203
Current Storage	306	248.077
Percent in Storage	9.39%	9.39%
Current Elevation	74.735	21.92
Discharge in CMS/CFS -US	40.0	1,113
Discharge in CMS/CFS MX	20.0	883

Combined Conservation Storage Amistad/Falcon	7,240	6,992.907
Current Storage Amistad/Falcon	1,079	874.766
Percent in storage	14.84%	14.94%

Mexican Reservoirs*	Flood Capacity	Cons. Capacity	Current MCM	Current AF	% storage of Conservation Capacity	Discharge CFS	Discharge CMS	Current as of:
San Gabriel - Rio Grande	317,340	244,431	31,782	62,278	33%	544	18,250	11-Jun-24
Boquilla - Rio Conchos	327,803	282,671	872,410	542,291	25%	1,153	33,303	11-Jun-24
El Madero - Rio San Pedro	477,833	342,263	68,331	53,775	19%	212	8,222	11-Jun-24
Rio en Laguna - Rio Colorado	58,800	48						
Chihuahua - Rio Chivchar	37,764	21						
El Region - Rio Chivchar	7,755	6						
Luis L. Leon - Rio Conchos	532,410	292						
Consuelito - A. las vacas	25,711	24						
San Miguel - Rio San Diego	22,192	21						
La Fregata - Rio San Rodrigo	58,350	47						
V. Carranza - Rio Sabinas	132,972	613						
Las Bincas - Rio Alamo	133,627	43						
El Cuernillo - Rio San Juan	1784,292	1,023						
Maria Gomez - San Juan	2303,900	73						
<b>Totals</b>	<b>10,743,574</b>	<b>6,350</b>						

National Ownership at Amistad/Falcon	Conservation Capacity MCM	Current MCM	Current AF
Mexico at Amistad/Falcon	3,104,815	312,602	253,430
United States combined at Amistad/Falcon	4,164,007	781,004	614,774
<b>Combined Usable Storage - Mexico</b>			
<b>Combined Usable Storage - U.S.</b>			

National Ownership at Amistad/Falcon	Conservation Capacity MCM	Current MCM	Current AF
Mexico at Amistad/Falcon	3,104,815	312,602	253,430
United States combined at Amistad/Falcon	4,164,007	781,004	614,774
<b>Combined Usable Storage - U.S.</b>			

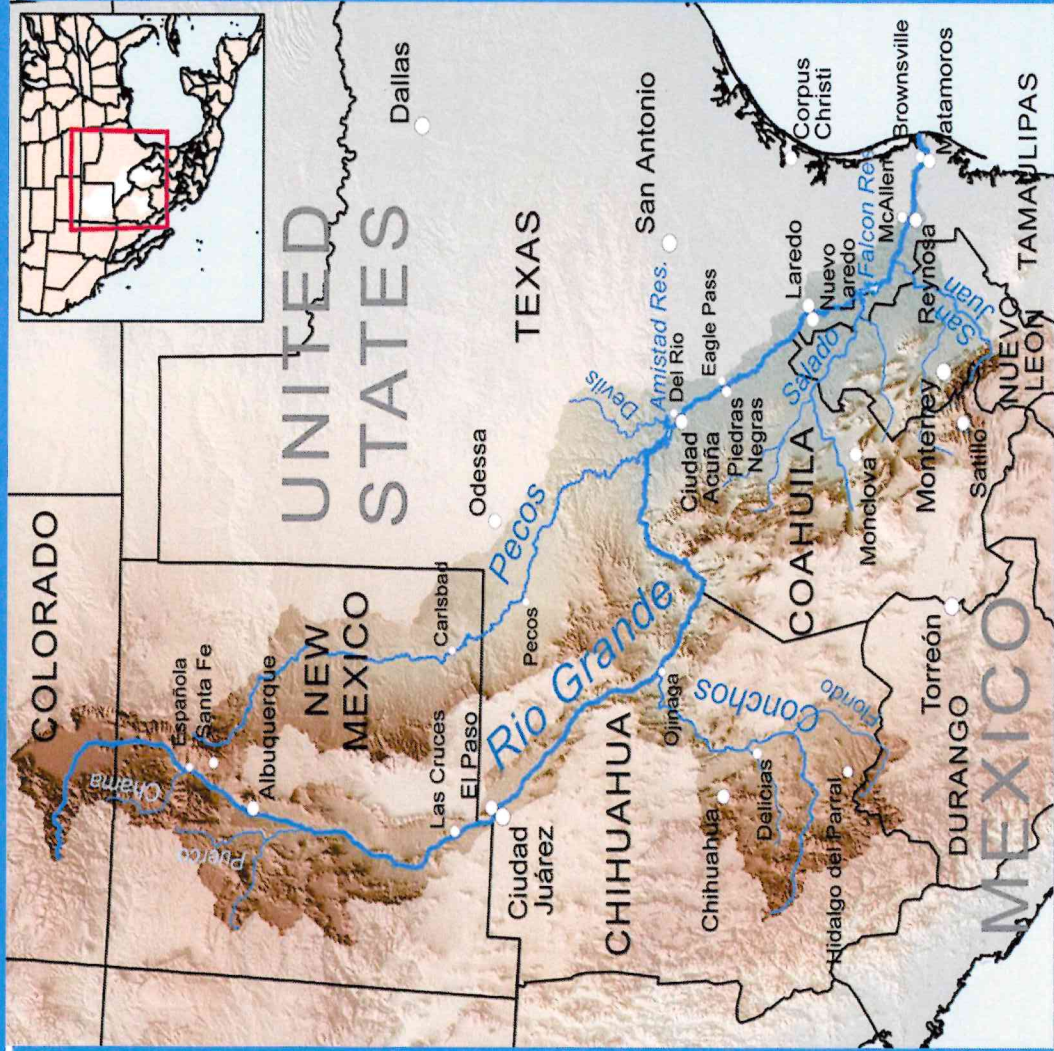
Conservation Capacity MCM	3,104,815	614,774	18.21%
Current MCM	312,602	614,774	19.76%
Current AF	253,430	614,774	18.21%

Conservation Capacity MCM	3,104,815	614,774	18.21%
Current MCM	312,602	614,774	19.76%
Current AF	253,430	614,774	18.21%

Source: International Boundary and Water Commission (IBWC) - Rio Grande Water Flows

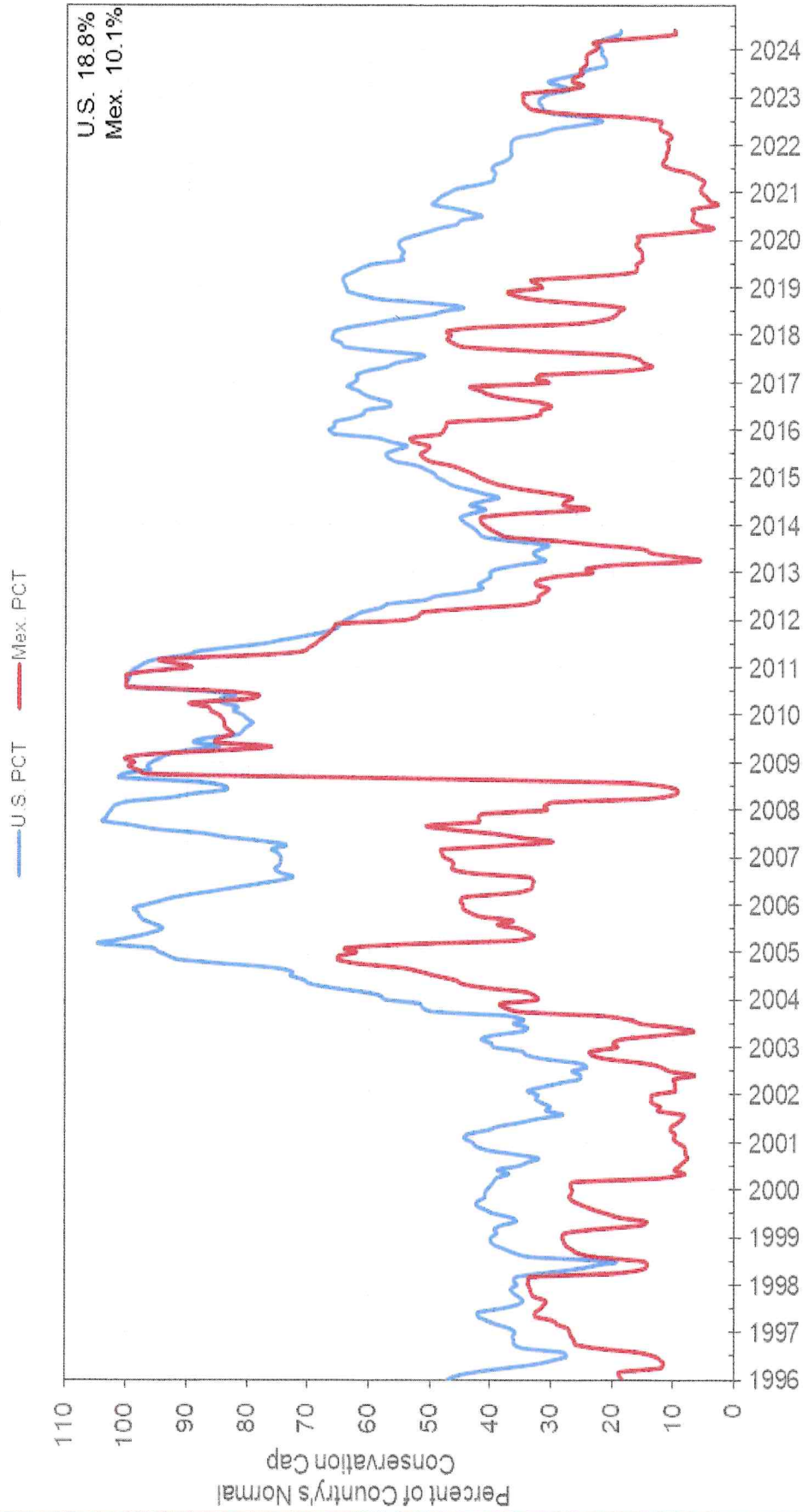
Current as of: **6/1/2024**

# DROUGHT STATUS



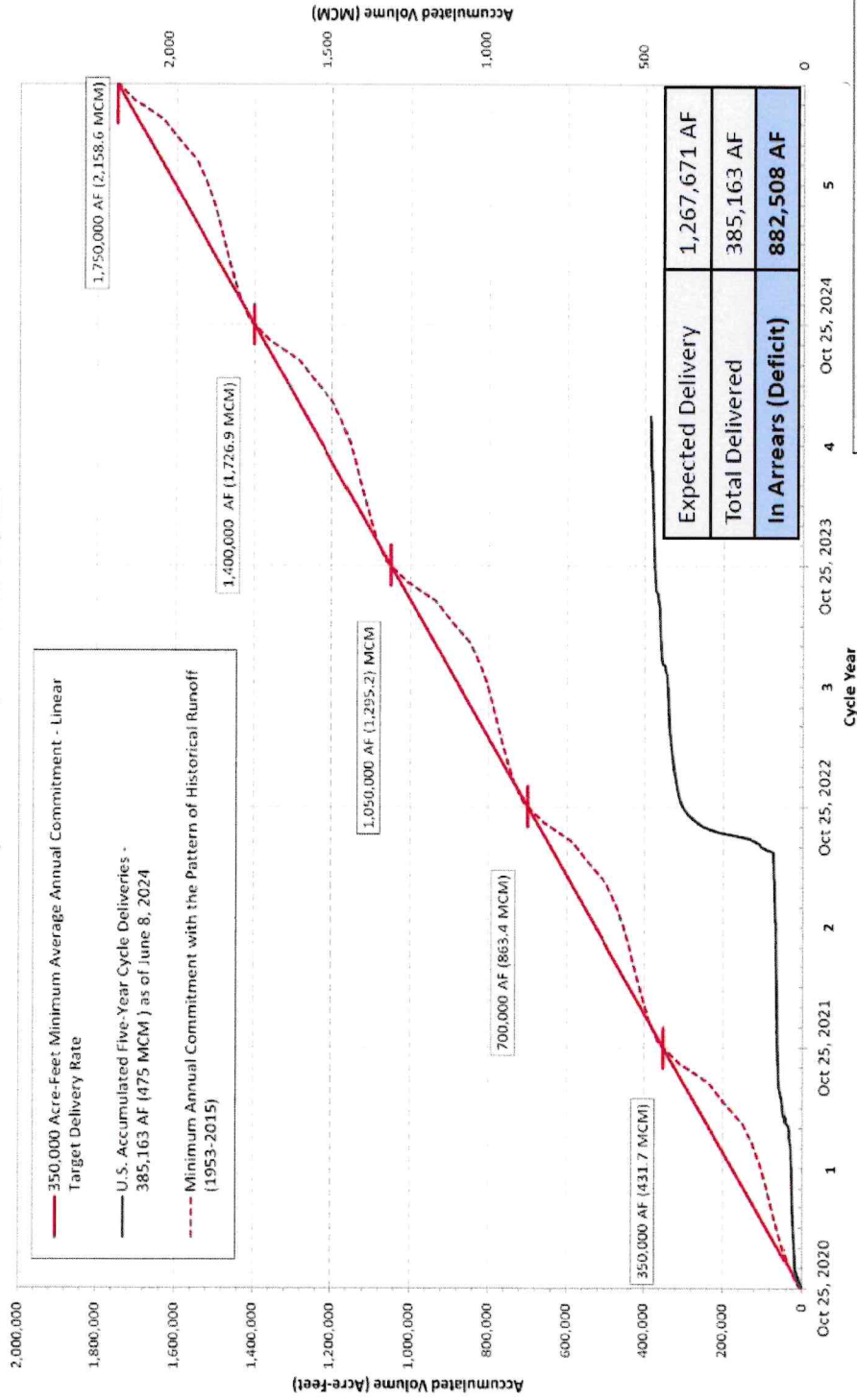
# DROUGHT STATUS

## Amistad-Falcon Percent of Conservation Capacity



# DROUGHT STATUS

## Rio Grande River Basin Estimated Volumes Allotted to the United States by Mexico from Six Named Mexican Tributaries and Other Accepted Sources\* under the 1944 Water Treaty Current Cycle: October 25, 2020 thru June 8, 2024



Data Provisional after December 31, 2023

International Boundary & Water Commission - United States Section

# DROUGHT STATUS

U.S. Ownership at Amistad/Falcon Reservoir System





# DROUGHT STAGE 3

## 3. Stage Three: Mandatory Compliance Water Warning.

During Stage Three, the following restrictions shall apply: All elements of Stage Two, including the goal of two percent (2%) reduction of water use per capita, shall remain in effect in Stage Three except that:

- a. It shall be unlawful for any person to irrigate any outdoor vegetation other than in zones and on the days as designated in Stage Two and only during the hours of midnight to 10:00 a.m. and 7:00 p.m. to midnight on such designated days. Irrigation by drip or hand-held buckets is permitted at any time in any zone.
- b. The watering of golf fairways areas is prohibited unless done with treated wastewater, reclaimed water, or well water.

A water surcharge shall be levied against all customers in the following amounts:

1. Residential/domestic metered customers (5/8 inch 3/4-inch 1-inch meters) shall pay a ten percent (10%) surcharge for any water used over an amount of 15,000 gallons per month.
2. Irrigation-metered customers shall pay a fifty percent (50%) surcharge for any water used over 10,000 gallons per month.
3. Commercial and industrial metered customers shall pay a ten percent (10%) surcharge for any water used over an amount equal to eighty percent (80%) of the maximum monthly consumption over any one billing cycle out of the last 12 months preceding the month in which the Stage Three designation was implemented.

# CURRENT RATES



## WATER Rates & Services

Base Fee: \$12.45

\$1.65 per 1000 gal.  
(0-4,999 gal.)

\$1.95 per 1000 gal.  
(5,000-9,999 gal.)

\$2.15 per 1000 gal.  
(10,000-14,999 gal.)

\$2.25 per 1000 gal.  
(15,000+ gal.)

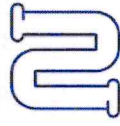


## SPRINKLER Rates & Services

Base Fee: \$12.45

\$2.15 per 1000 gal.

All Consumption



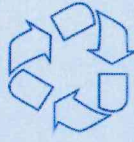
## SEWER Rates & Services

Base Fee: \$12.50

\$1.70 per 1000 gal.  
(0-19,999 gal.)

\$2.20 per 1000 gal.  
(20,000+ gal.)

All Consumption



## RECLAIMED (REUSED) Rates & Services

Base Fee: \$12.45

\$1.32 per 1000 gal.  
All Consumption

# DROUGHT STAGE 3

Difference between 15kgal & 20kgal's		
5,000	\$2.25	\$11.25
5000 @ 50% SURCHARGE	\$3.375	\$16.88
<b>NET DIFFERENCE</b>		<b>\$ 5.63</b>

# DROUGHT STAGE 4

And only during the times established under Stage Three of this section.

- a. All outdoor irrigation of vegetation shall be allowed only between the hours of midnight to 10:00 a.m. and 8:00 p.m. to midnight on designated days.
- b. The washing of automobiles, trucks, trailers, boats, airplanes, and other types of mobile equipment not occurring upon the immediate premises of commercial carwashes and commercial service stations and not in the immediate interest of the public health, safety and welfare shall be prohibited except on designated irrigation days and only on the owners of such vehicles, etc., premises.
- c. Car washes and commercial service stations in the immediate interest of the public health, safety and welfare shall be limited to fifty percent (50%) of their monthly average usage based on the last twelve (12) billing periods for each of such customer. After such usage, the General Manager shall enforce this subsection by terminating water service.
- d. Commercial nurseries, commercial sod farmers, and similarly situated establishments shall water only on designated days between the hours of 10:00 p.m. and 5:00 a.m. and shall use only handheld hoses, drip irrigation systems, or handheld buckets.
- e. The filling, refilling or adding of water, except to maintain the structure integrity of the pool, to swimming and/or wading pools is prohibited.
- f. The operation of any ornamental fountain or similar structure is prohibited.
- g. A water surcharge shall be levied against all customers during Stage Four in the following amounts:
  1. Residential/domestic metered customers (5/8-inch, 3/4-inch, and 1-inch meters) shall pay a seventy five percent (75%) surcharge for any water used over an amount 10,000 gallons per month.
  2. Those customers who are not metered shall pay a seventy five percent (75%) surcharge for any water used.
  3. Those commercial and industrial metered customers shall pay a ten percent (10%) surcharge for any water used over an amount equal to sixty percent (60%) of the maximum monthly consumption over any one billing cycle out of the last twelve (12) months preceding the month in which the Stage Four designation was implemented.

## Mandatory Compliance Water Shortages.

The following restrictions shall apply. All elements of Stage Three, of two percent (2%) reduction of water use per capita, shall remain in effect except that it shall be unlawful for any person to irrigate any area except on the following designated days in the zones established

- Zone 1 - Sunday
- Zone 2 - Monday
- Zone 3 - Tuesday
- Zone 4 - Wednesday
- Zone 5 - Thursday
- Zone 6 - Friday

# DROUGHT RESPONSE

## DCP Structure

- I. Declaration of Policy, Purpose, and Intent
- II. Public Involvement
- III. Public Education
- IV. Coordination with Regional Water Planning Group
- V. Authorization
- VI. Application
- VII. Definitions
- VIII. Criteria for Initiation and Termination of Drought Response Stages
- IX. Drought Response Stages
- X. Additional Water Sources
- XI. Review Committee – Formation, Powers and Duties
- XII. Variances
- XIII. Violations, Penalties, and Enforcement

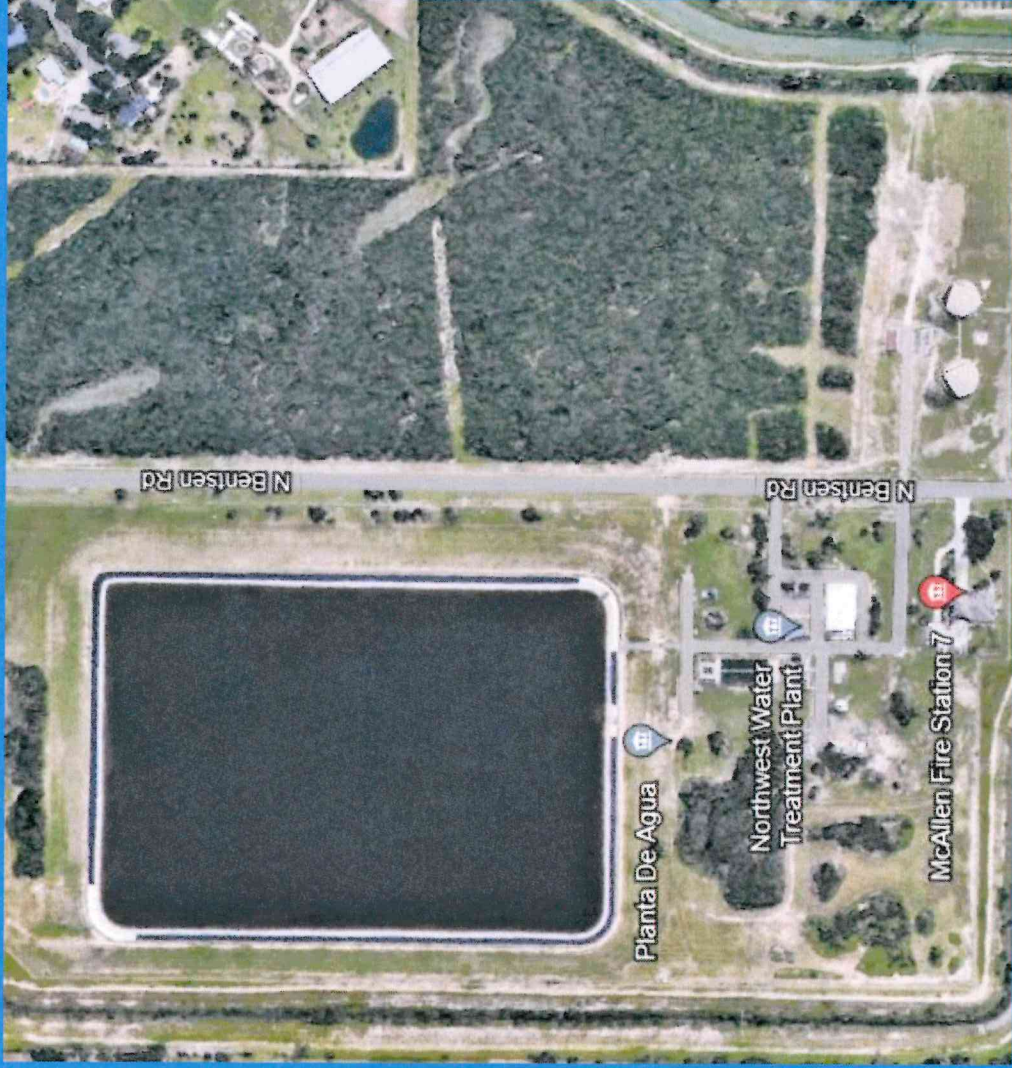
A Zoom meeting interface showing a grid of participants. The participants are arranged in a grid with their names and profile pictures visible. The names listed are: Javier Adame, mca7944, Javier Adame - MHW, Javier Ramirez, Ricardo Saldana, Ricardo Saldana, manuel.ponce, manuel.ponce, Juan Pablo Terr..., Juan Pablo Terr..., Agua Special Ut..., Agua Special Utility D..., Victor City of Ed..., and Chief R. McGinnis. The interface also shows a 'Mute All' button and a 'Close All' button.

# DROUGHT RESPONSE



AMI METER  
REPLACEMENT  
PROJECT - 48,000  
SOLID STATE  
WATER METERS

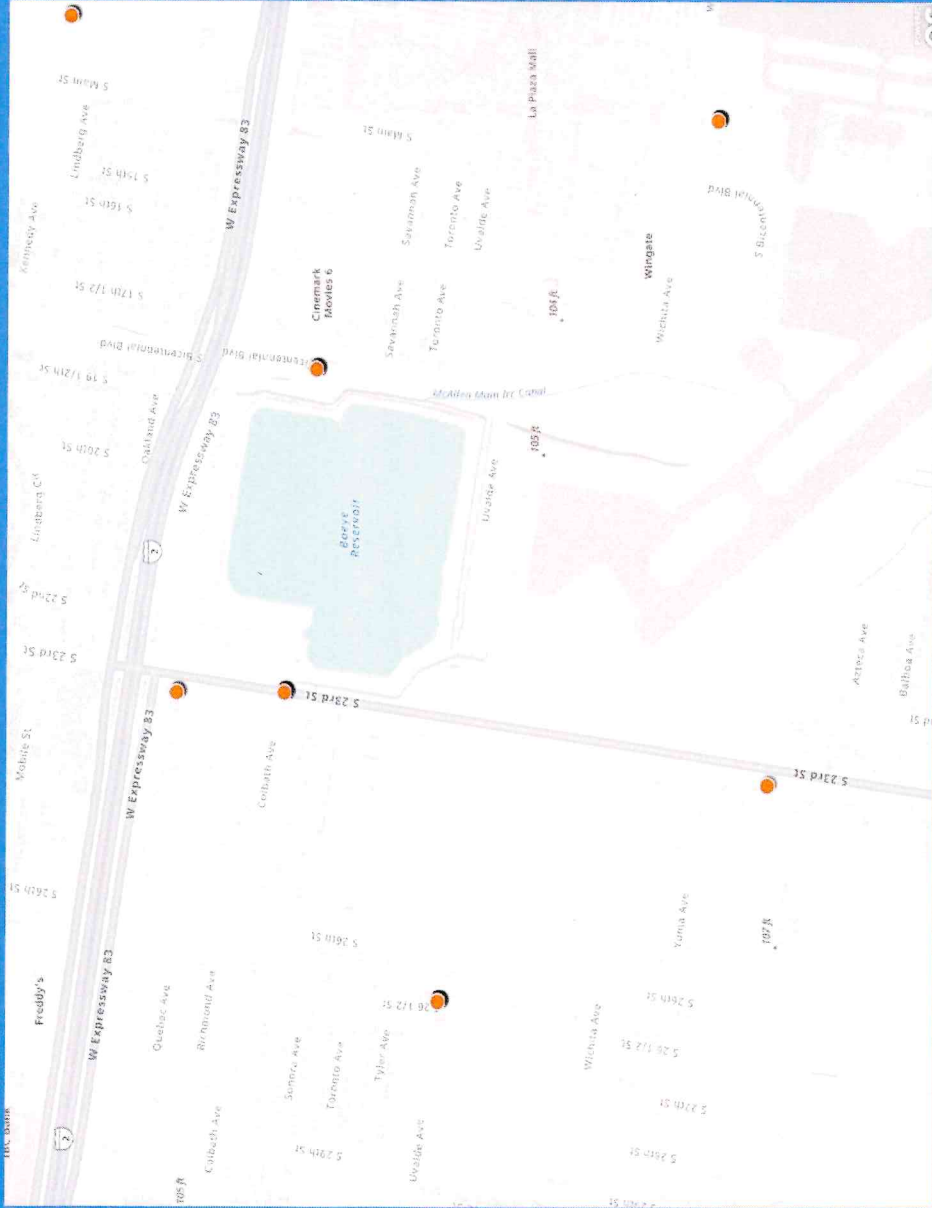
# DROUGHT RESPONSE



**10 MGD BRACKISH  
DESALINATION PLANT;  
COST ESTIMATE - \$60 -  
\$70 Million**

**ANTICIPATED AWARD  
for DESIGN - 1<sup>ST</sup> MPUB  
MTG. OF JULY**

# LOCAL MONITORING WELLS



# DROUGHT RESPONSE